

# Er-Li (Erbium-Lithium)

H. Okamoto

The Er-Li phase diagram was unknown in [Massalski2].

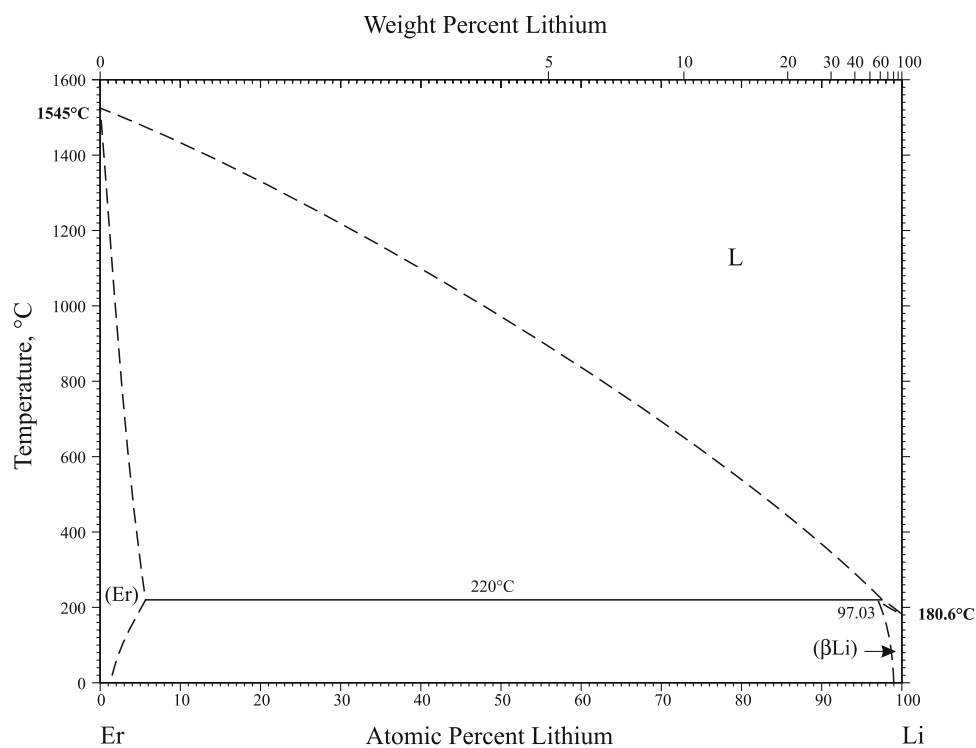
Figure 1 shows the Er-Li phase diagram constructed based on a schematic phase diagram and a table of invariant reaction temperatures and compositions given in [1998Gan]. Table 1 shows Er-Li crystal structure data.

## Reference

**1998Gan:** N.N. Ganiev, Kh.M. Nazarov, and M.D. Badalov, Interaction of Lithium with Rare-earth Metals, *Izv. Ross. Akad. Nauk, Metally*, 1998, (6), p 109-112, in Russian; TR: *Russ. Metall.*, 1998, (6), p 132-136

**Table 1** Er-Li crystal structure data

| Phase | Composition, at.% Li | Pearson symbol | Space group                    | Strukturbericht designation | Prototype |
|-------|----------------------|----------------|--------------------------------|-----------------------------|-----------|
| (Er)  | 0 to ?               | <i>hP2</i>     | <i>P6<sub>3</sub>/mmc</i>      | <i>A3</i>                   | Mg        |
| (βLi) | 97.03-100            | <i>cI2</i>     | <i>Im<math>\bar{3}m</math></i> | <i>A2</i>                   | W         |



**Fig. 1** Er-Li phase diagram